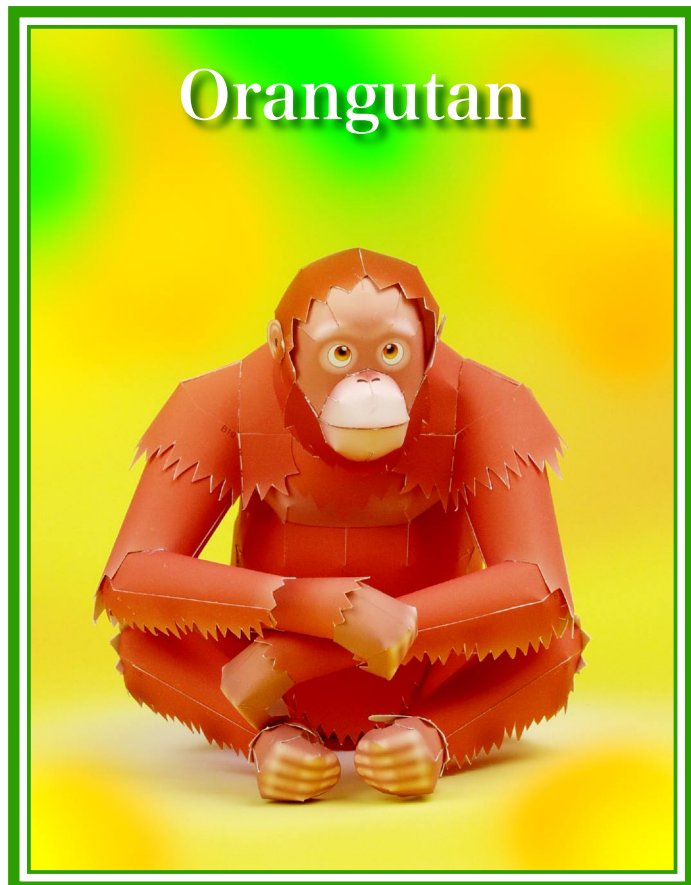


CREATIVE PARK

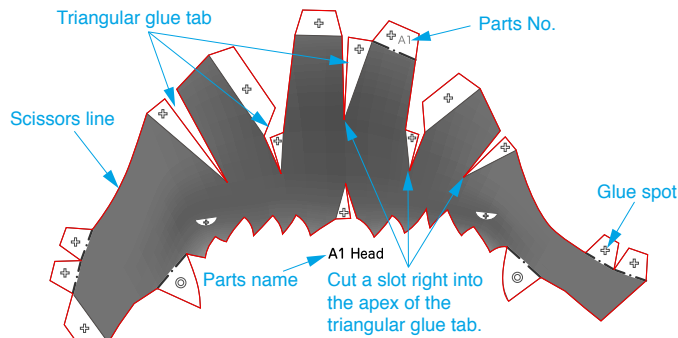
<http://www.canon.com/c-park/>



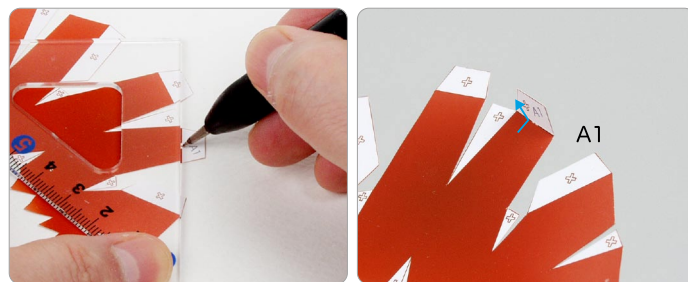
A Assemble the head

Use pattern: Page2.

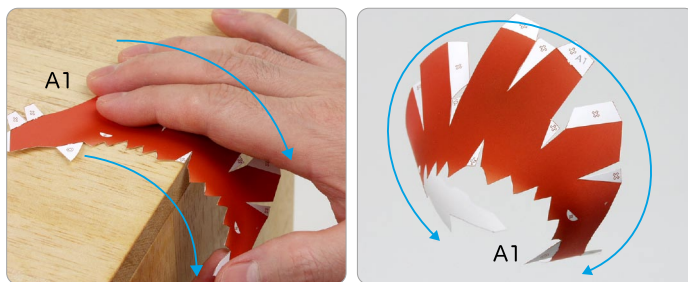
- ① Cut out A1 by cutting along the lines.
- ★ Cut along the line marked .



- ② Make a valley fold on A1.
- ★ Trace along the valley fold line with a stencil pen, scoring it to make it easier to fold.



- ③ The parts will be easier to assemble if curled.
- ★ Using the photo as a guide, apply pressure with the palm of your hand, gradually curling the paper in the direction of the arrow.



Tools	Notation Key
Scissors	Scissors line
Paste, or woodwork glue	Mountain fold
Stencil pen, or bodkin	Valley fold
Ruler	Glue spot
	Glue reverse side
	A1, B1 Parts No.

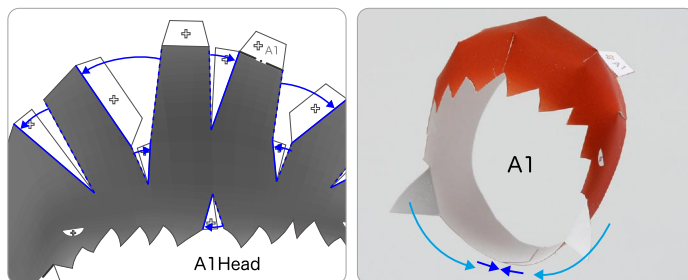
- ◆ The Assembly instructions are divided into three blocks: A (head), B (body and arms), and C (lower back and legs). Follow the instructions for each block to assemble your orangutan.

- ◆ ★ mark is a basic assembly technique that remains the same regardless of the part. Instructions are printed only for the first instance.

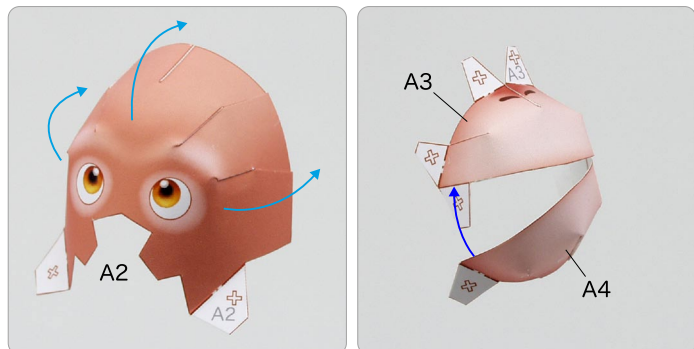
<Caution>

- ✘ Keep scissors and glue away from small children.
- ✘ Be careful not to cut your fingers when using scissors.

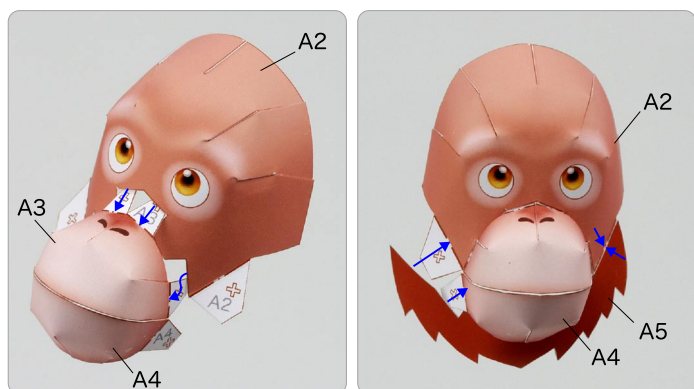
- ④ Add a slight curl to A1 when attaching it.
- ★ Attach the triangular glue tabs so that the front side becomes convex.
- ★ Using the photo as a guide, attach in the direction of the arrow.



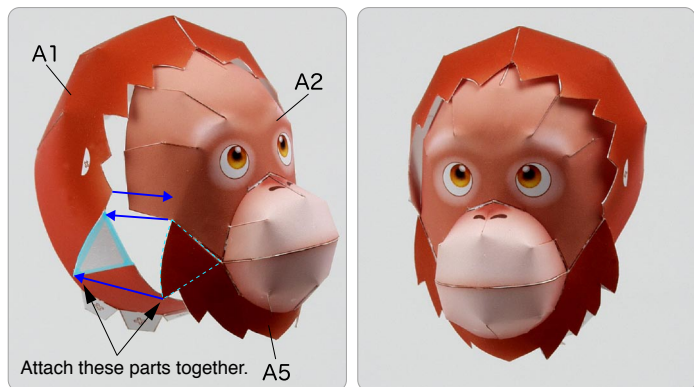
5 Assemble A2, and attach A3 and A4.



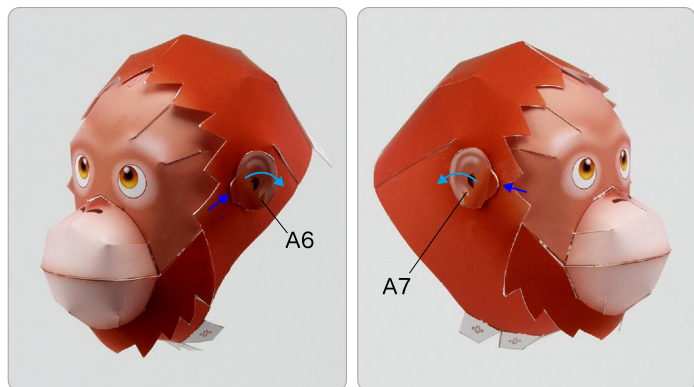
6 Attach A2, A3 and A4, and attach A5 to them.



7 Attach the head and the face.



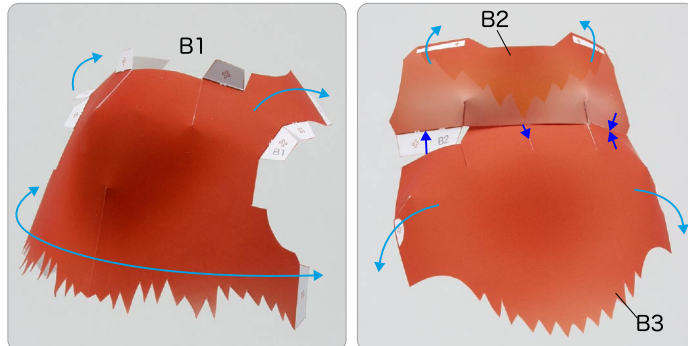
8 Attach A6 and A7 to the head, and the head is complete.



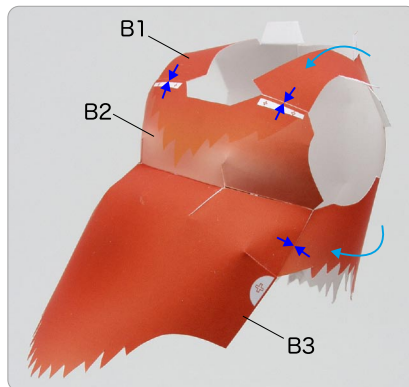
B Assemble the body and the arms

Use pattern: Page3 to Page5.

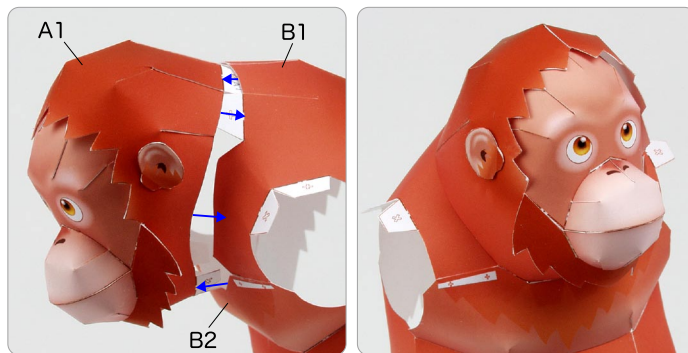
1 Assemble B1, and attach B2 and B3.



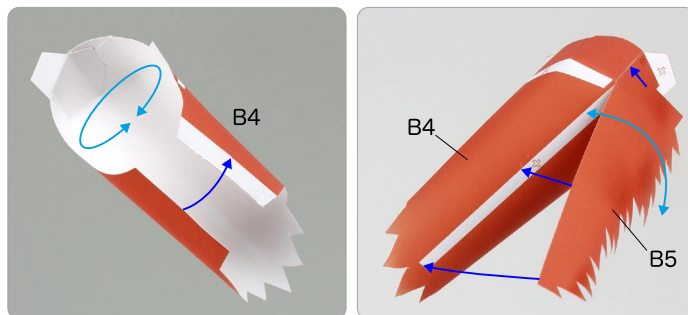
2 Attach B1, B2, and B3.



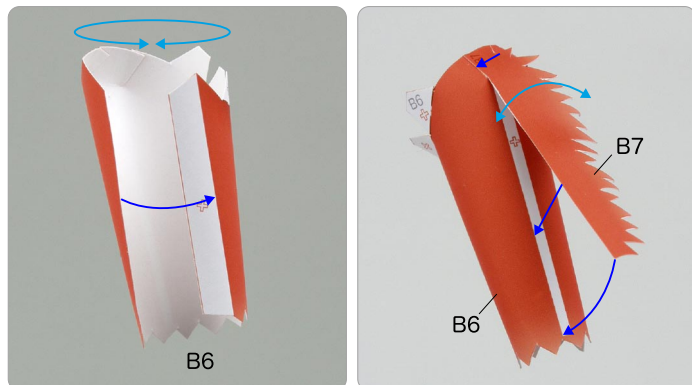
3 Attach the head and the body.



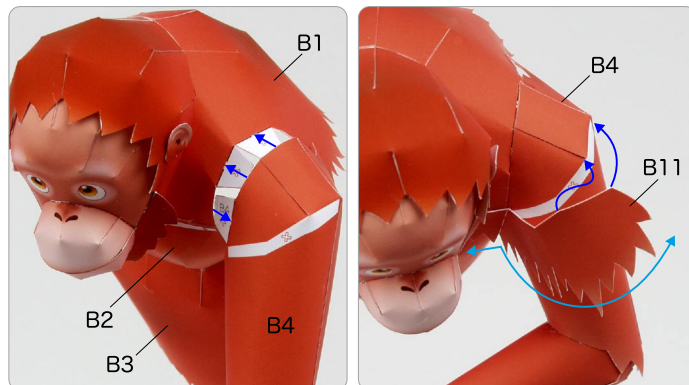
4 Assemble B4, and attach B5 to it.



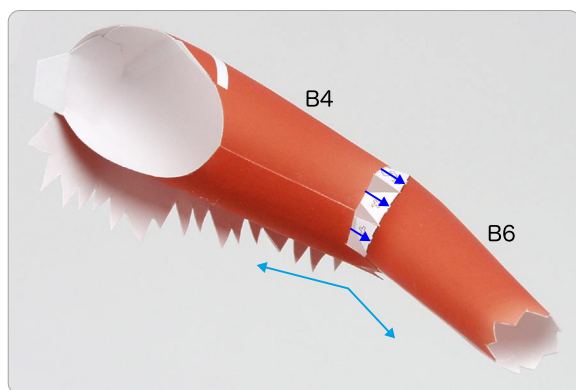
5 Assemble B6, and attach B7 to it.



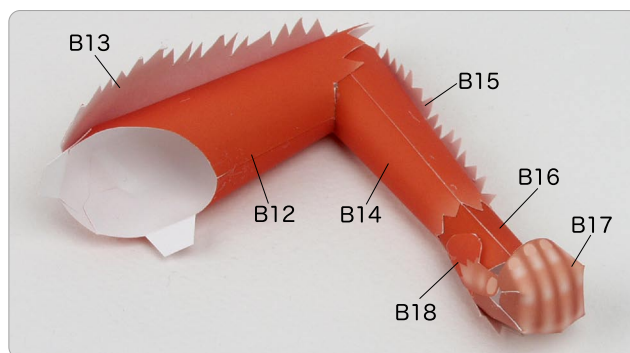
9 Attach the left arm to the body, and attach B11 to them.



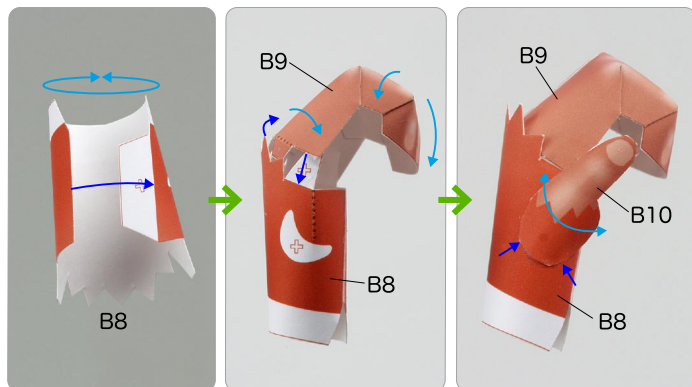
6 Attach B4 and B6.



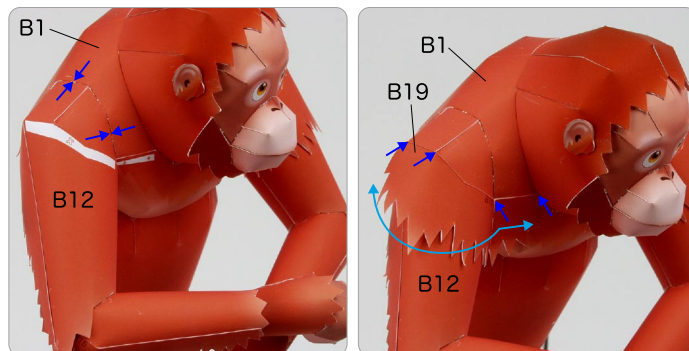
10 In the same way, attach B12 to B18.



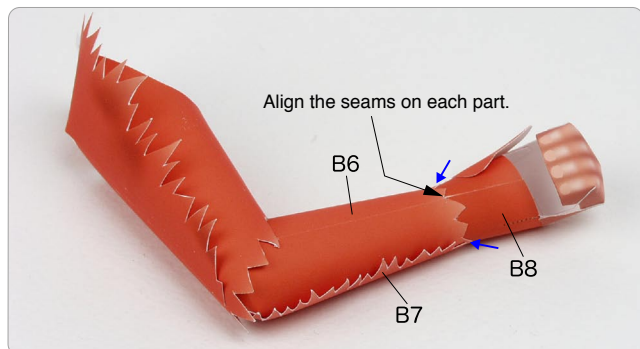
7 Assemble B8, and attach B9 and B10 to it.



11 Attach the right hand to the body, and attach B19 to them to complete the body.

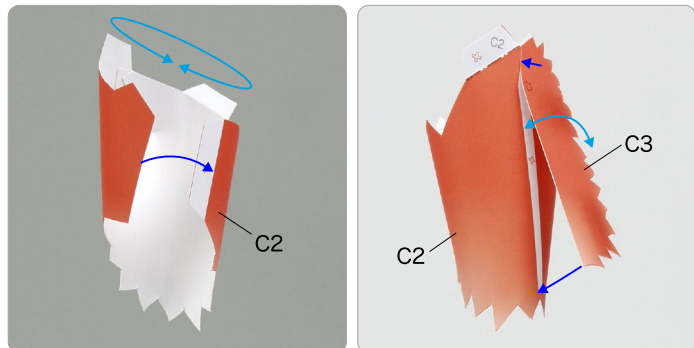


8 Attach the left hand to the left arm.

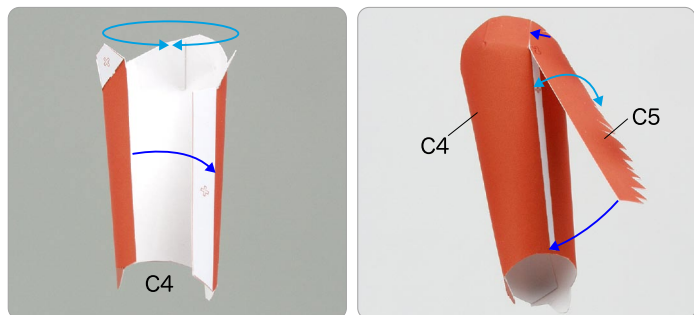


C Assemble the lower back and the legs
Use pattern: Page6 / Page7.

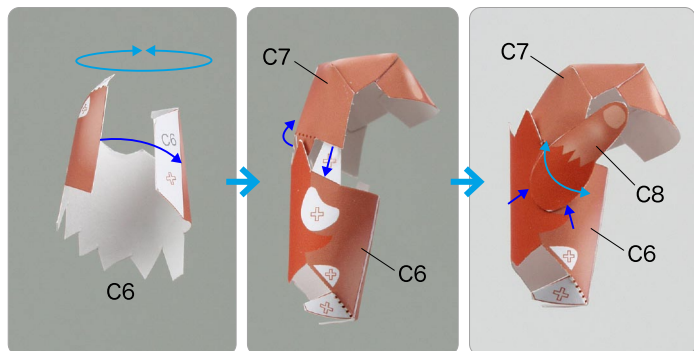
① Assemble C2, and attach C3 to it.



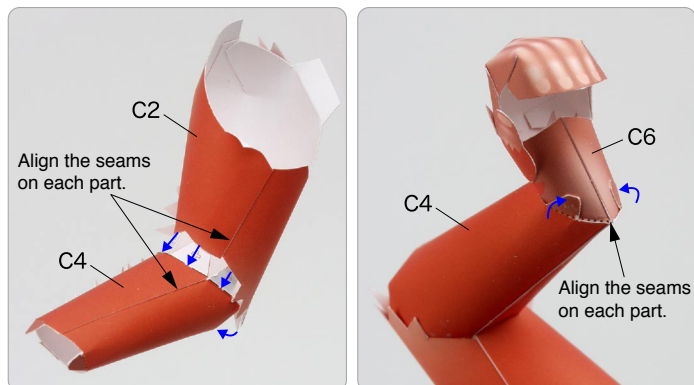
② Assemble C4, and attach C5 to it.



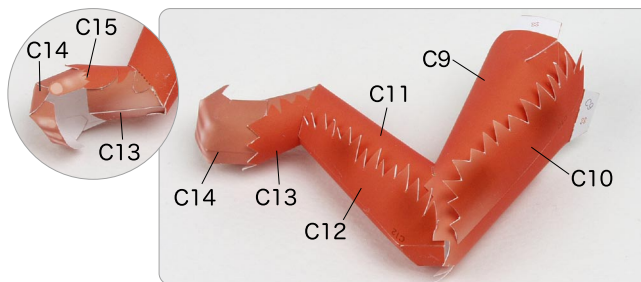
③ Assemble C6, and attach C7 and C8 to it.



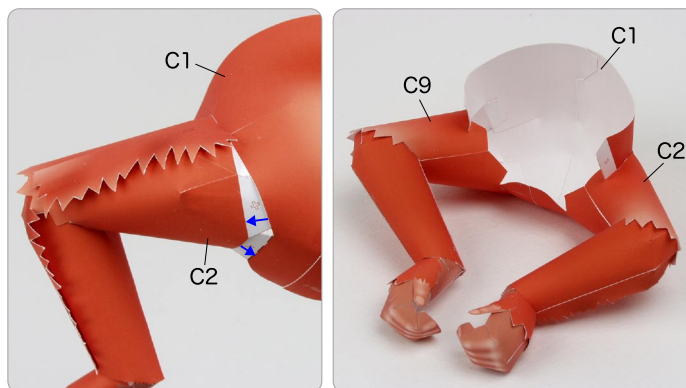
④ Attach C2 and C4, and attach C4 and C6.



⑤ In the same way, attach C9 to C15.



⑥ Assemble C1, and attach the left leg and the right leg to it.



⑦ Attach the body and C1. Attach C16 to the body, and your orangutan is complete!

